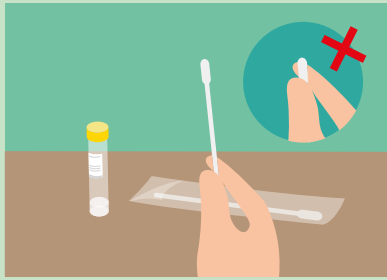


# Procedure for collecting combined nasal and throat swabs

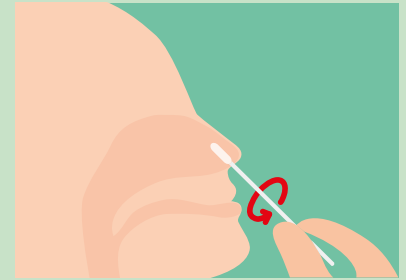
**Steps** (Clean hands thoroughly before and after collection of specimen by hand washing with liquid soap and water for at least 20 seconds; if hands are not visibly soiled, 70 to 80% alcohol-based handrub can be used as an alternative) :



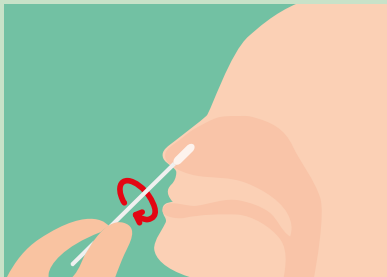
1. Take the swab from the sterile packet. Only hold the swab by the stalk. **DO NOT** touch the swab tip.



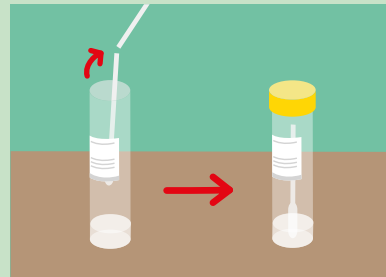
2. Tilt the head back slightly to straighten the nasal passage.



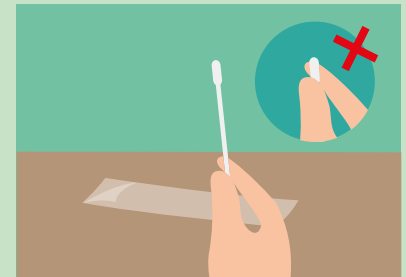
3. Gently insert the swab 1 to 2 cm inside the nostril parallel with the nose bridge, or until resistance is felt. Gently rotate the swab and leaving in place for 10 to 15 seconds. Slowly rotate as the swab is withdrawn.



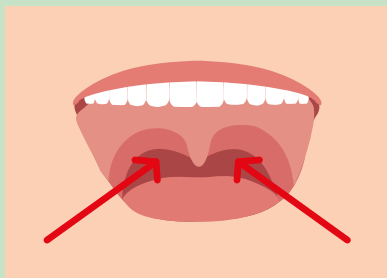
4. Sample the other nostril with same swab.



5. Break the swab stalk at the indentation mark, and put the swab tip into the bottle with pre-filled transport medium.



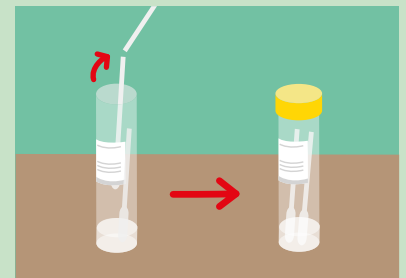
6. Take the other swab from the sterile packet. Only hold the swab by the stalk. **DO NOT** touch the swab tip.



7. Looking into a mirror with the head slightly tilted back, open the mouth and insert swab into the posterior pharynx and tonsillar areas.



8. Say "Ah", then rub the swab over both tonsillar pillars and posterior oropharynx for three times, and avoid touching the tongue, teeth, and gums.



9. Break the swab stalk at the indentation mark, and put the swab tip into the bottle with pre-filled transport medium. Screw tight the cap to avoid leakage. Make sure the particulars are all filled in on the bottle label. Put the specimen bottle in a zip-lock plastic bag with biohazard label and then into the 2nd bag. Put the completed request form in the outside pouch. The specimen should be sent for testing as soon as possible.